

压力变送器 - ATEX / IECEx 认证

PTM/Ex - 可编程压力变送器



产品优势

- 认证: ATEX, IECEx, EAC, GOST, ABS, DNV, Lloyds
- 0 ... 100 mbar 和 0 ... 1000 之间可选择任意量程
- Static accuracies available to 0.1 %FS
- 压力量程可调
- Hysteresis and repeatability better than 0.025 %
- 硅压阻技术适用于静态和动态压力测量
- 可调整零点和满量程点
- 大气压量程可选



EN 60068-2-6	4G (4 ... 100 Hz)
EN 60068-2-27	100 G (6 ms)
EN 61326-2-3	EMC
EN 61000-6-2	EMC
EN 61000-6-3	EMC

A□	S□ :
	: AS100 / Anderol Food / PAO 4
	: (316L / 1.4435)
	: (Gr. 2) C-276
	: (316L / 1.4435)
	: (Gr. 2) C-276
	200 g ,

HART001	DIN43650 (EN 175301-803A)
HART002	Binder 723, 5
HART012	MIL C26482, 10-6
HART018	M12x1, 5

INTERFACE / SOFTWARE

Article number	Description
102442	PTM/Ex - Interface
101224	PC Software

MANUALS

Article number	Description	
DEB003	Configuration software	10.00.0079
DEB005	User manual sensor	10.00.0089
DMM023	Operating and safety instructions	10.88.0271

Ordering information

Type	x	xxxx	xxxx	xx	xxx
PTM/Ex	47				
Pressure type					
Gauge	1				
Absolute	2				
Sealed gauge	3				
Pressure measuring range					
Any measuring ranges between 0 ... 100 mbar and 0 ... 1000 bar available		xx			
Barometric pressure ranges available		xx			
Process connection					
G 1/2 M, bore 14 mm (Fig. 1)		17			
G 1/4 F (Fig. 2)		00			
G 1/4 M (Fig. 3)		11			
G 1/4 M, manometer EN 837 (Fig. 4)		12			
G 1/2 M (Fig. 5)		13			
G 1/2 M, manometer EN 837 (Fig. 6)		16			
1/4 NPT M (Fig. 7)		10			
1/2 NPT M (Fig. 8)		19			
G 1/2 M, frontal diaphragm (Fig. 9), (1)		14			
G 1/2 M, frontal diaphragm Hastelloy C-276 (Fig. 9), (1)		37			
G 1/2 M, with flush diaphragm membrane (Fig. 10), (1)		15			
G 1/4, with flush diaphragm (Fig. 11), (1)		21			
Other pressure connections on request		99			
Electrical connection					
DIN 43650 (EN 175301-803A), demountable, IP 65, (Fig. 12), (2), (3)			01		
Binder 723, 5 pins, IP 67 (Fig. 13), (2)			03		
MIL C26482, 10-6, 316L, IP 67 (Fig. 14), (2)			80		
M12x1, 4 pins, (Fig. 15), (2)			07		
PUR cable, blue, IP 67, (Fig. 16), (4), (6)			17		
FEP cable, blue, IP 67, (Fig. 16), (4)			22		
PUR cable, blue, IP 68, (Fig. 17), (4), (6)			36		
Other electrical connections on request			99		
Output signal					
4 ... 20 mA			05		
4 ... 20 mA with overvoltage protection			08		
Accuracy					
$\leq \pm 0.25$ % FS (< 500 mbar / > 600 bar)				1	
$\leq \pm 0.1\%$ FS (≥ 500 mbar ... 600 bar)				2	

Temperature range	
T6 (Ta: -25 ... 55 °C) 0 ... 70 °C compensated (without cooling fins)	0
T4 (Ta: -25 ... 85 °C) -25 ... 85 °C compensated (without cooling fins)	1
T3 (Ta: -25 ... 85 °C) -25 ... 85 °C compensated (with cooling fins)	2
Options	
Throttle, (7)	A
Special oil filling: Anderol Food (for food applications)	G
Special oil filling: PAO4 (silicone free)	Q
Pressure connection elastomerfree	N
Pressure connection welded	V
Active compensated (≥ 100 mbar ≤ 100 bar)	E
Titanium, (9)	K
Seals: FKM (standard)	U
Seals: EPDM	S
Seals: Kalrez, (5)	T
Seals: NBR, (8)	H

(1) Process connection available ≤ 600 bar

(2) Cable socket connector not included

(3) IP67 if the cable socket connector HART001 is installed correctly

(4) Please specify the required cable length and medium

(5) Profile seal not included

(6) For operating temperature $> 50^\circ\text{C}$, PE or FEP cable must be used

(7) Only with pressure connection Fig. 3, Fig. 5, Fig. 6, Fig. 7 and Fig. 8

(8) Suitable for drinking water

(9) Titanium available for $P_n \leq 400$ bar (burst pressure max. 550 bar), not all versions are available in titanium

Process connections

$P_N \geq 100 \text{ mbar} \dots 25 \text{ bar} (1)$

Fig. 1 - G 1/2 M, bore 14 mm

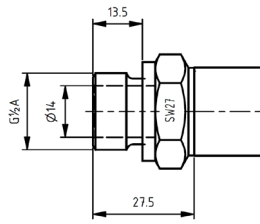


Fig. 5 - G 1/2 M

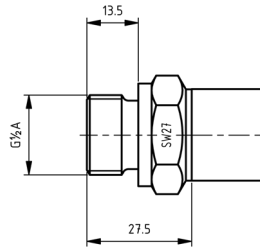


Fig. 2 - G 1/4 F

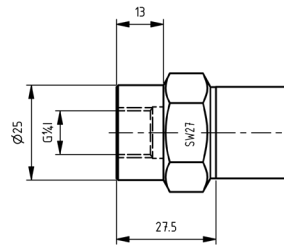


Fig. 6 - G 1/2 M, Manometer EN837

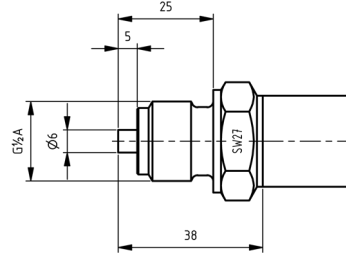


Fig. 3 - G 1/4 M

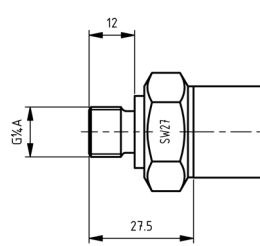


Fig. 7 - 1/4 NPT M

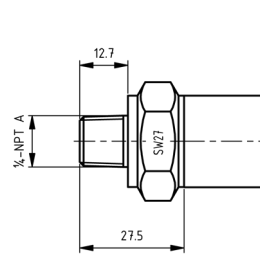


Fig. 4 - G 1/4 M, Manometer EN837

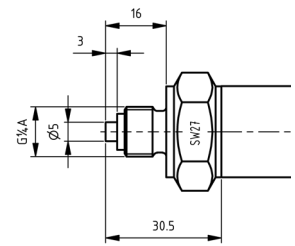
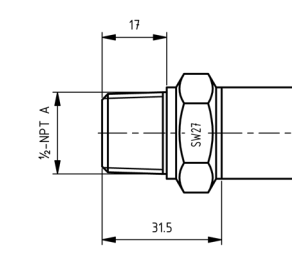


Fig. 8 - 1/2 NPT M



$P_N > 25 \text{ bar} \dots 1000 \text{ bar} (1) (2)$

Fig. 2 - G 1/4 F

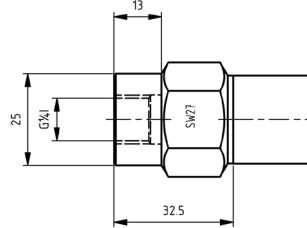


Fig. 5 - G 1/2 M

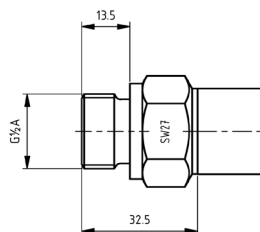


Fig. 3 - G 1/4 M

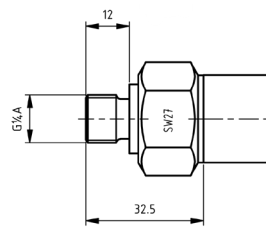


Fig. 6 - G 1/2 M, Manometer EN837

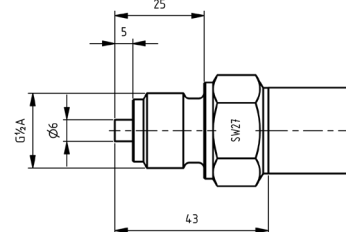


Fig. 4 - G 1/4 M, Manometer EN837

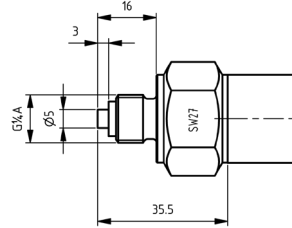


Fig. 7 - 1/4 NPT M

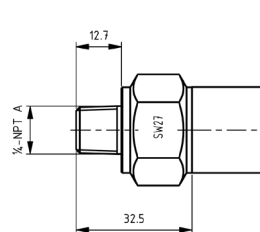
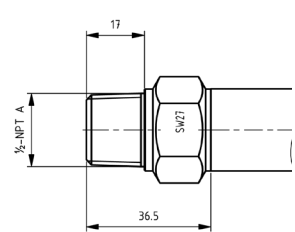
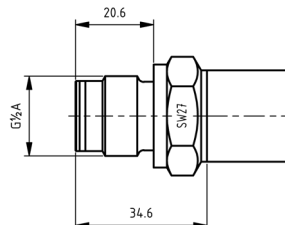


Fig. 8 - 1/2 NPT M



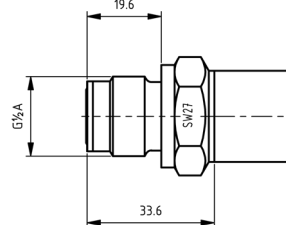
$P_N \geq 100 \text{ mbar} \dots 600 \text{ bar}$

Fig. 9 - G 1/2 M, frontal diaphragm



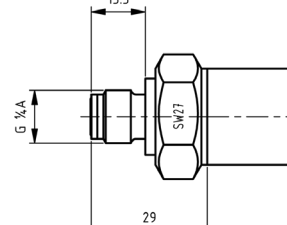
$P_N \geq 100 \text{ mbar} \dots 1000 \text{ bar} (3)$

Fig. 10 - G 1/2 M, flush diaphragm



$P_N \geq 10 \text{ bar} \dots 600 \text{ bar}$

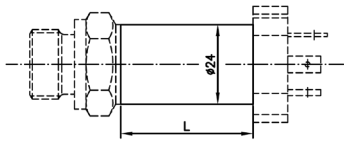
Fig. 11 - G 1/4 M, flush diaphragm



- (1) Dimensions for welded or elastomerfree versions may be different
- (2) Not all process connections available for pressure ranges > 600 bar
- (3) Dimensions for pressure ranges > 600 bar differ

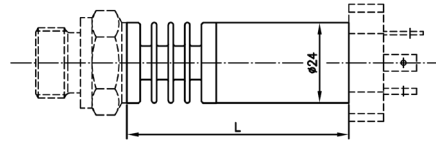
Dimensions

Version for medium temperature up to 100°C



L = 94 mm for connector DIN 43650 (EN 175301-803A)

Version for medium temperature >100°C up to max. 150°C



L = 121 mm for connector DIN 43650 (EN 175301-803A)

Electrical connections

Fig. 12 - DIN43650 (EN 175301-803A)

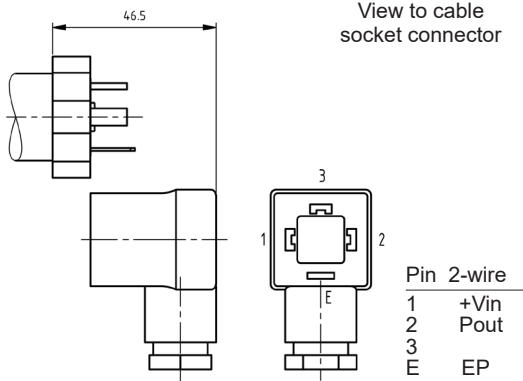


Fig. 13 - Binder 723, 5 pins

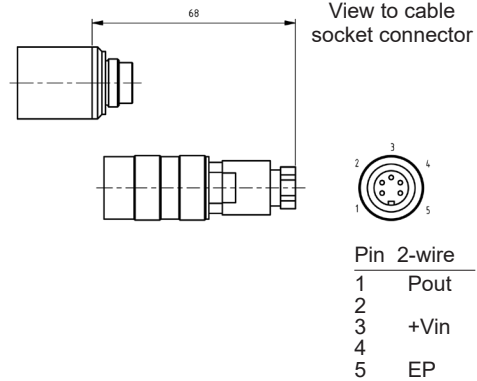


Fig. 14 - MIL C26482, 10-6, 316L

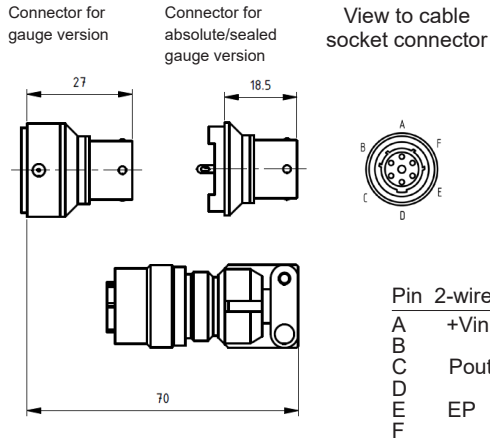


Fig. 15 - M12 x 1, 4 pins (Lumberg RSF4)

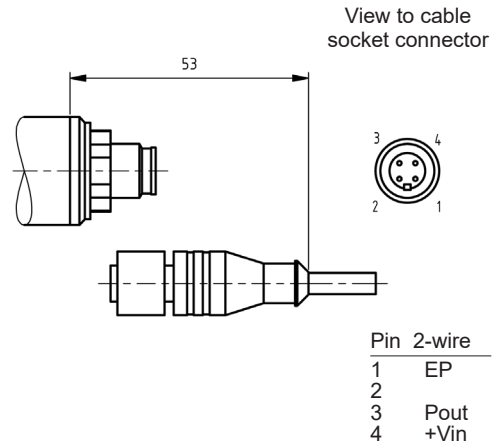


Fig. 16 - Cable connection IP67

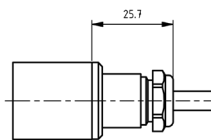
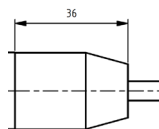


Fig. 17 - Cable connection IP68



Colour 2-wire	
white	+Vin
yellow	Pout
grey	EP

Specifications may change without notice

© 2022 - STS Sensor Technik Sirmach AG, Rütihofstrasse 8, CH - 8370 Sirmach, Switzerland, www.stssensors.com